

# Bedroom Furniture Hardware

## Page J2

Mirror Brackets

Wing Mirror Frame Hinges

Wing Mirror Braces

## Page J3-J4

Tie Racks

Pole Sockets

Cloths Rod

Ladder Hooks

Post Hangers

## Page J5-J7

Bed Brackets

Bed Pins

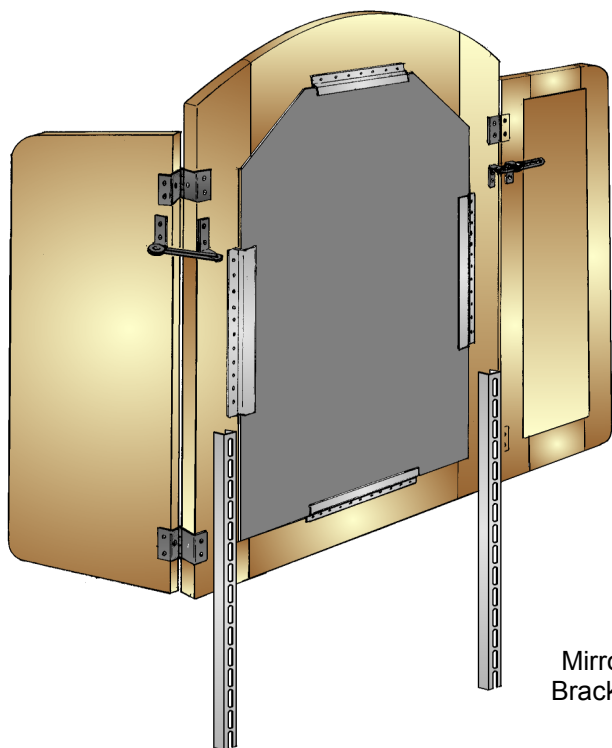
Stack Packs

Mirror Hangers

Corner Braces

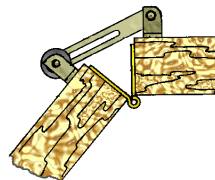
Anti-Tip Hardware





Mirror Bracket

Mirror Bracket made from 18 gauge steel, is one of the strongest mirror supports in the industry. Stocked in five sizes. Custom lengths are available in large quantities.



Wing Mirror Brace



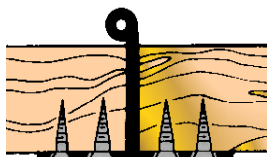
Wing Mirror Hinge

Mirror Hinges are designed to self-align the wing to the center mirror. Simply place the mirror frames face down on your work surface and fasten the hinges to the back. With Kemp Wing mirror hinges it's a simple one-person operation. Stocked in the thickness shown with a variety of knuckle lengths, some with decorative tips.

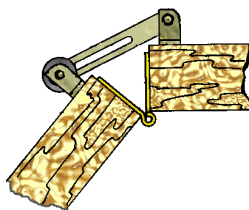
Wing Mirror Brace is designed to provide the extra quality of holding mirror wings in place. This brace is a simple upgrade to any bedroom furniture



Mirror Bracket



Wing Mirror Hinge



Wing Mirror Brace

## Mirror Bracket 3/4" x 3/4" x 18 gauge

Description	Finish	Part Number
20" x 3/4" x 3/4"	Plain	709 02000 01
30" x 3/4" x 3/4"	Plain	709 03000 01
36" x 3/4" x 3/4"	Plain	709 36001 01
40" x 3/4" x 3/4"	Plain	709 04000 01

## Wing Mirror Hinges

Description	Finish	Pin	Part Number
3/4" Frame - 2" Butt type	Brass	Plain	381 34990 03
3/4" Frame - 2" Butt type	Brass	Plain	381 50680 04
3/4" Frame - 2" Self-mortise type	Brass	Plain	381 7038 05
7/8" Frame - 2" Butt type	Brass	Tips	381 36250 03
1" Frame - 2" Butt type	Brass	Plain	381 36410 03

## Wing Mirror Brace

Description	Finish	Part Number
Wing Mirror Brace	St. Bronze	391 11166 05



## Slat Roll Mattress Supports

Slat roll systems serve as the mattress foundation. A slat roll consists of a number of boards, usually about one inch or wider, that go across the bed to hold up the mattress. Slat systems contain between 13 and 16 slats held in place by slat roll strapping.

Slat Roll Mattress Support



## Slat Roll Strapping

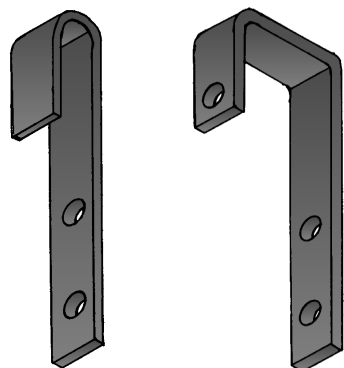
Description	Color	Part Number
1" x 750' Slat Roll Strapping	Black	509 49629 08
2" x 750' Slat Roll Strapping	Black	509 49629 28

Slat Roll Strapping

# Bed & Ladder Hooks



See us on the Web at: [KempHardware.com](http://KempHardware.com)

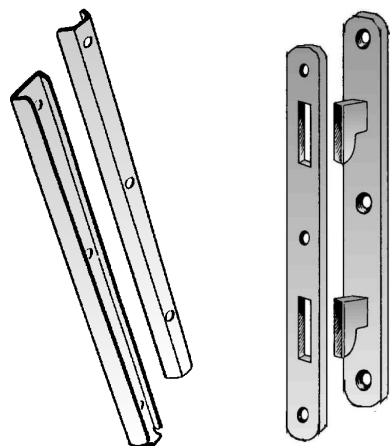


Metal Rail

Wood Rail

## Bunk Bed Ladder Hooks - Black Finish

Type	Color	Part Number
Metal Rail 3/16" x 5/8" x 4"	Black	531 54003 08
Wood Rail 1" x 5/8" x 4"	Black	531 54100 08
Wood Rail 1 1/4" x 5/8" x 4"	Black	531 54104 08
Wood Rail 1 1/2" x 5/8" x 4"	Black	531 54108 08



Bed Post Wedges    Bed Post Hangers

## Bed Post Wedges

Description	Color	Part Number
4" x 3/4"	Plain	531 44564 01
6" x 3/4"	Plain	531 44566 01

## Bed Post Hangers

Description	Color	Part Number
5" x 5/8" sold in sets (1 bed)	Zinc	531 44455 12

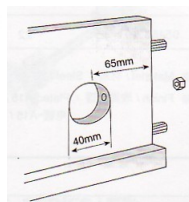


Rail

Post

## Locking Bed Hook & Bed Post Bracket

Description	Color	Part Number
Bed Post Bracket	Plain	531 41476 01
Bed Rail Bracket Part "A" (Left)	Plain	531 41476 21
Bed Rail Bracket Part "B" (Right)	Plain	531 41476 41



## Blind Bed Rail Bolt Set

Description	Color	Part Number
4 bolts, 4 inserts, 4 c-nuts, 4 hex nuts	Yellow Zinc	531 99000 12

**J-4**

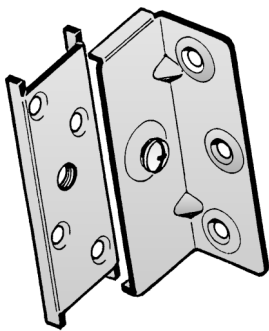
7305 Madison Street, Paramount Ca. 90723-0529  
E-mail [Sales@KempHardware.com](mailto:Sales@KempHardware.com)

Phone: (562) 634-2553  
Fax: (562) 634-2052



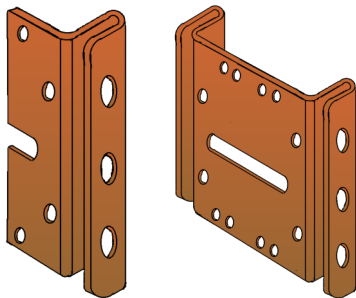
**Two Piece Locking Bed Bracket with safety lock**

Description	Color	Part Number
130mm Rail Bracket	Black	531 48130 08
130mm Left 90 Degree Headboard Bracket	Black	531 48131 08
130mm Right 90 Degree Headboard Bracket	Black	531 48132 08
130mm Left Sleigh Bed Headboard Bracket	Black	531 48135 08
130mm Right Sleigh Bed Headboard Bracket	Black	531 48136 08



**Super Rigid Corner Bed Bracket - pre-installed screw**

Description	Finish	Part Number
3 1/2" tall (sold in sets - 1 bed)	Zinc	531 02712 01

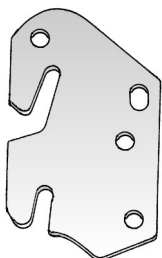


Single

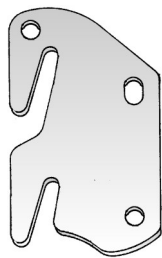
Double

**Bed Lock Headboard Brackets**

Description	Finish	Part Number
Single 3 3/4" High	Brown	531 44034 05
Single 6" High with 2" height adjustment	Brown	531 44064 05
Double 3 3/4" High (Queen/Full) 3 1/2" Spread	Brown	531 44134 05
Double 6" High (Queen/Full) 3 1/2" Spread	Brown	531 44600 05
Double 6" High (King/Cal King) 2" Spread	Brown	531 44602 05



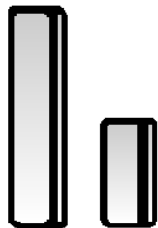
"A" Hook



"B" Hook

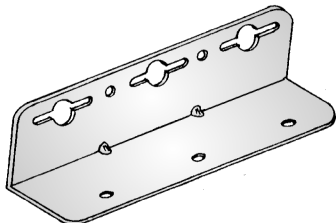
**Bed Hooks - Works with Bed Lock Headboard Brackets**

Description	Color	Part Number
"A" Hook 4" x 2 5/16"	Plain	531 41425 01
"B" Hook 4" x 2 5/16"	Plain	531 41424 01



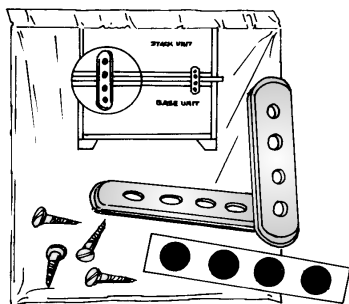
## Bed Pins - Plain Steel

Description	Finish	Part Number
1/4" x 5/8" Steel Bed Pin Bracket	Plain	531 42250 08
1/4" x 7/8" Steel Bed Pin Bracket	Plain	531 42270 08
19/64" x 5/8" Steel Bed Pin	Plain	531 42012 01
19/64" x 3/4" Steel Bed Pin	Plain	531 42010 01
19/64" x 7/8" Steel Bed Pin	Plain	531 42014 01
19/64" x 1" Steel Bed Pin	Plain	531 42101 01
19/64" x 1 1/4" Steel Bed Pin	Plain	531 42104 01
19/64" x 2" Steel Bed Pin	Plain	531 42102 01
3/8" (.365) x 2 1/2" Steel Bed Pin	Plain	187 43108 01
3/8" (.365) x 3" Steel Bed Pin	Plain	68 107
3/8" (.365) x 3" Steel Bed Pin	Zinc	531 43300 02
3/8" (.365) x 4" Steel Bed Pin	Plain	187 79840 01



## Waterbed Brackets

Description	Finish	Part Number
6" x 1 1/4" x 1 1/4"	Plain	531 61212 01



## Stack-Pack Kit

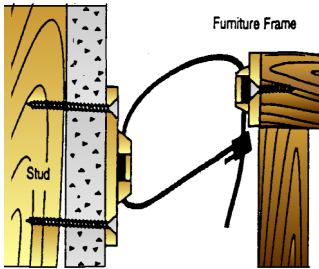
Shipped with furniture to allow customer to assemble and fasten upper and lower units of furniture. Kit contains 2 mending plates, screws, felt tabs and instructions.

Description	Finish	Part Number
Stack-Pack Kit	Zinc	532 95020 02



## Mirror Hanger

Description	Finish	Part Number
Single Hole Mirror Hanger	Zinc	532 01001 02
Double Hole Mirror Hanger	Zinc	532 01002 02



509 00100 02



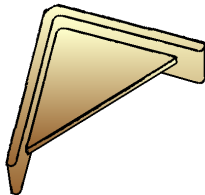
509 00100 12

## Tip-Restraint Kit - contains brackets, screws & strap

Description	Part Number
Plastic/Plastic Tip-Restraint Kit	509 00100 02
Steel/Plastic Tip-Restraint Kit	509 00100 12

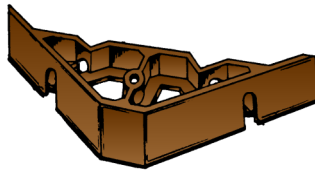
Designed to help prevent furniture tip-over. Also helps prevent furniture tip-over during minor tremors. Installation instructions in English, French and Spanish.

**Caution:** This product is not to be a substitute for proper parental supervision. Manufacturer assumes no liability for improper installation, excessive loads place on screws,



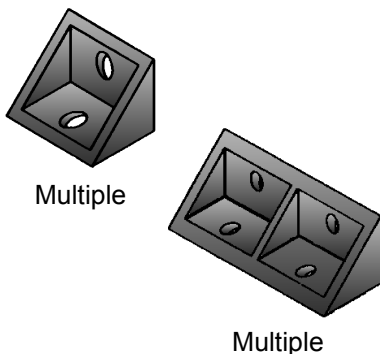
## Small Plastic Glue Block

Description	Color	Part Number
1 3/4" x 1 3/4"	Beige	652 44439 06



## Reinforced Plastic Corner Brace

Description	Color	Part Number
3" x 3" x 3/4" Corner Brace	Brown	652 10303 05



## Small Plastic Corner Brace

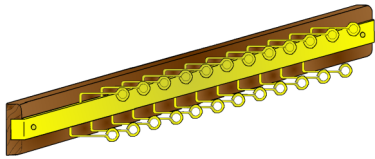
Description	Color	Part Number
3/4" x 3/4" Corner Brace	Black	652 10200 08
3/4" x 2" Corner Brace	Black	652 10202 08
3/4" x 3 1/2" Corner Brace	Black	652 10203 08
3/4" x 6" Corner Brace	Black	652 10206 08



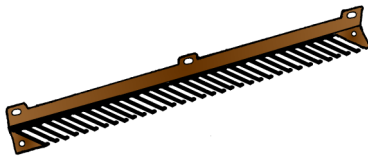
## Trundle Bed Caster

Description	Color	Part Number
1 9/16" Wheel x 1 13/16" High	Zinc/Black	223 61125 12

## Tie Racks



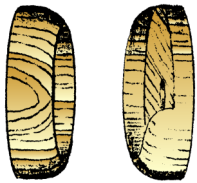
Oak and Metal Tie Rack



Plastic Tie Rack

Description	Color	Part Number
6 loop 1 3/16" x 8 3/4" with belt hooks	Black/Chrome	780 01200 08
12 loop 1 3/16" x 8 3/4" with belt hooks	Light/Brass	780 01200 13
12 loop 1 3/16" x 8 3/4" with belt hooks	Dark/Brass	780 01200 93
12 loop 1 3/16" x 8 3/4" with belt hooks	Light	780 01200 13
12 loop 1 3/16" x 8 3/4"	Unfinished	780 02400 00
24 loop 1 3/16" x 13 3/4"	Dark	780 02400 33
24 loop 1 3/16" x 13 3/4" with belt hooks	Dark/Brass	780 02410 33
36 loop 1 3/16" x 18 3/4"	Dark/Brass	780 03600 33
Plastic Tie Rack	Brown	78040000 05

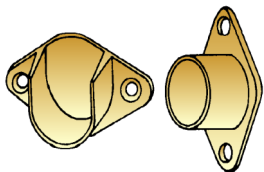
## Hanging Cloths Sockets



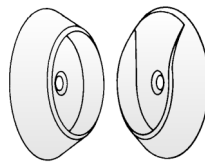
Wood Sockets



Oval Socket



Die Cast Zinc Socket



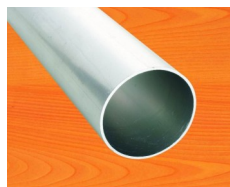
Plastic Sockets

Description	Finish	Part Number
Wood 1 3/8" (sold in pairs)	Plain	209 01300 03
Oval Socket	Nickel	780 07440 02
Die Cast - Open	Brass	196 08130 03
Die Cast - Closed	Brass	196 08120 03
Die Cast - Open	Nevada	196 08130 07
Die Cast - Closed	Nevada	196 08120 07
Plastic - 1 3/8" (sold in pairs)	Brown	780 11400 05

## Hanging Cloths Rod



Oval Cloths Rod



Round Cloths Rod

Description	Finish	Part Number
Wood 1"x 36" Birch	Plain	209 10036 02
Wood 1 3/8" x 36" Birch	Plain	209 10336 02
Oval Steel - Nickel plated	Nickel	780 96001 02
Round Steel - Nickel plated	Nickel	780 96011 02