

RL-138 DRAWER LOCK



CYLINDER: D019×L22mm zinc alloy
D019×L26mm zinc alloy
D019×L32mm zinc alloy
D019×L38mm zinc alloy
Chrome plated, brass plated,
other finish available upon
request.

FINISH:

TOCK BACK SHELL: Type Bs01 and Bs02 for
selection.

ACCESSORIES: 2 keys
1 rosette
Optional striker plate A1001,
A1002 or A1003.

KEY HEAD: Rubber Key Head(RKH),
Brass Key head(BKH) or
Folding Keyhead(FKH) is
available for selection.

ORDER EXAMPLE: 138 D19×L22 Bs02 RKH

***WITH CLICK SOUND**

RL-139 DRAWER LOCK

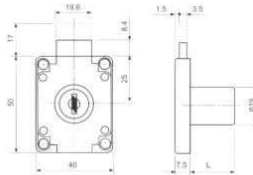


CYLINDER: D19×L22mm zinc alloy
D19×L32mm zinc alloy
Chrome plated, brass plated, other
finish available upon request.

FINISH:

ACCESSORIES: 2 keys
1 rosette
Optional striker plate A1001,
A1002 or A1003.

***WITH CLICK SOUND**



RL-338 DRAWER LOCK

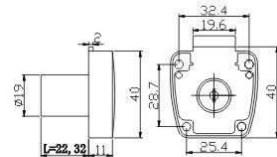


CYLINDER: D19×L22mm zinc alloy
D19×L32mm zinc alloy
Nickel plated, other
finish available upon request.

FINISH:

ACCESSORIES: 2 keys
1 rosette
Optional striker plate A1004.

***WITH CLICK SOUND**



RL-202 DRAWER LOCK for sling door

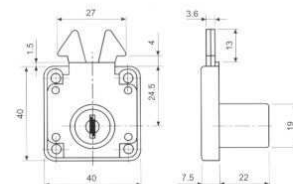


CYLINDER: D19×L22mm zinc alloy
Nickel plated, other finish
to be special order.

FINISH:

ACCESSORIES: 2 keys
1 rosette
1 striker plated A1005

***WITH CLICK SOUND**



RL-101 DRAWER LOCK steel base

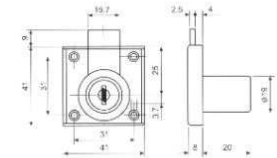


CYLINDER: D19×L22mm zinc alloy

FINISH: Nickel plated, other finish
available upon request

ACCESSORIES: 2 keys
1 rosette
Optional striker plate A1004

***WITH CLICK SOUND**

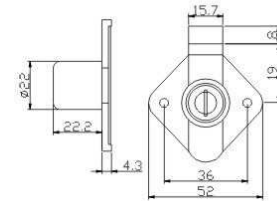


RL-801 DRAWER LOCK



CYLINDER: D22×22

FINISH: Chrome plated, other finish
available upon request



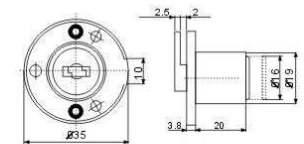
RL-123 DRAWER LOCK



CYLINDER: D19×L20mm zinc alloy

FINISH: Nickel plated, other finish to
be special order.

ACCESSORIES: 2 keys
1 L-type steel striker plate,
flat striker plate to be
special order.
1 rosette



RL-109 DRAWER LOCK

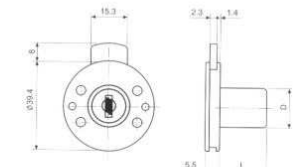


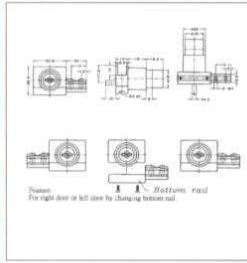
CYLINDER: D16×L20mm zinc alloy
D19×L20mm zinc alloy
Chrome plated, other finish
available upon request

FINISH:

ACCESSORIES: 2 keys
1 rosette

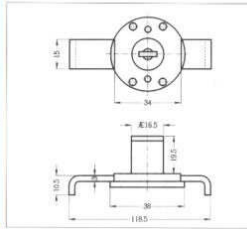
***WITH CLICK SOUND**





ORDER NO.	FINISH
C6415	CHROME PLATED
B6415	BRASS PLATED
BK6415	BLACK PLATED
MN6415	MATTE NICKEL PLATED

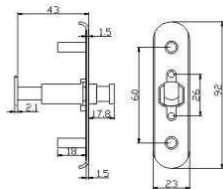
MATERIAL: ZINC ALLOY
 KEY PROFILE: DOUBLE BIT KEY
 ACCESSORIES: 2 CROSS POINT SCREW



ORDER NO.	FINISH
N6701	NICKEL PLATED
B6701	BRASS PLATED
BK6701	BLACK PLATED

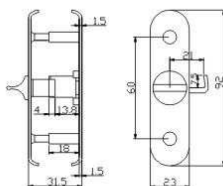
CYLINDER: ϕ 16.5mm
 MATERIAL: ZINC ALLOY
 KEY PROFILE: DOUBLE BIT KEY
 ACCESSORIES: 2 KEYS WITH PLASTIC COVER
 1 ROSETTE ϕ 16.5mm
 2 STRIKES

RL-701



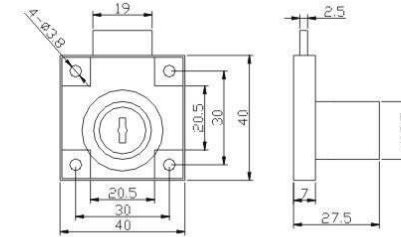
DOUBLE-RAIL PUSH/PULL DOOR LOCK
 COLOR: CHROME
 MATERIAL: ZINC-ALLOY

RL-702



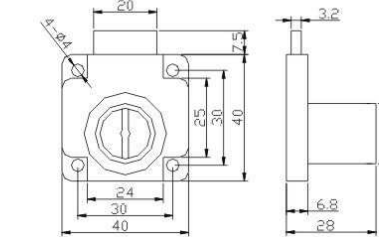
SINGLE-RAIL PUSH/PULL DOOR LOCK
 COLOR: CHROME
 MATERIAL: ZINC-ALLOY

RL-138S-D19X22



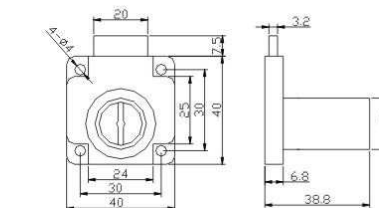
COLOR: CHROME
 MATERIAL: Steel

RL-138A-D19X22



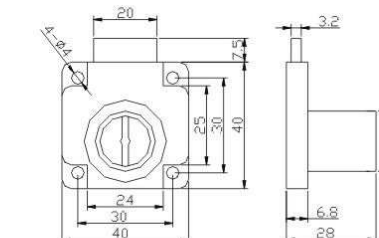
COLOR: CHROME
 MATERIAL: Plastic+Zamak

RL-138A-D19X32



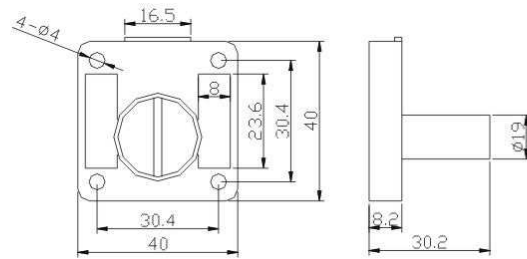
COLOR: CHROME
 MATERIAL: Plastic+Zamak

RL-139A-D19X22



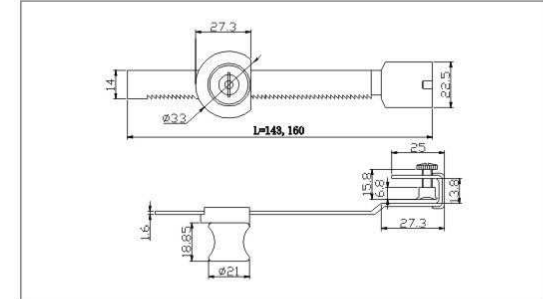
COLOR: CHROME
 MATERIAL: Plastic+Zamak

RL-138P-D19X22



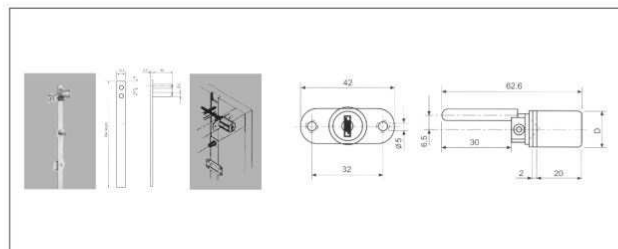
COLOR: CHROME
MATERIAL: Plastic

RL-318 SHOWCASE LOCK



SIZE: 3-8MM TOUGHENED GLASS
COLOR: CHROME, GOLD
MATERIAL: ZINC-ALLOY

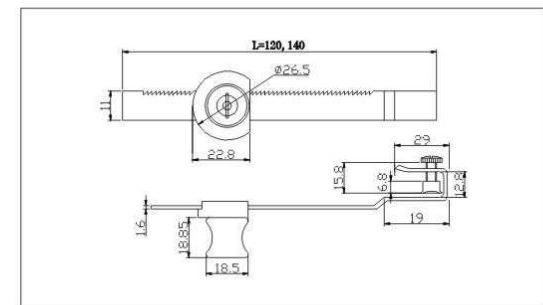
RL-288 CENTRAL LOCK front mounted system



CYLINDER: D16.5 x L20mm zinc alloy
FINISH: Chrome plated, other finish to be special order
ACCESSORIES: 2 keys
1 aluminum bar 500mm/600mm for selection other size to be special order
1 rosette other size to be special order
1 aluminum bar 500mm or 600mm for selection other size to be special order
3 pegs A1021, other size to be special order
2 bar guides A1020

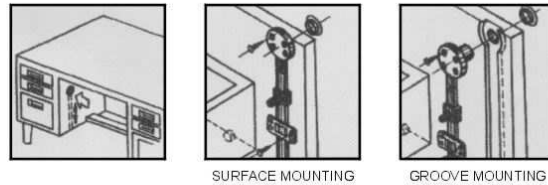
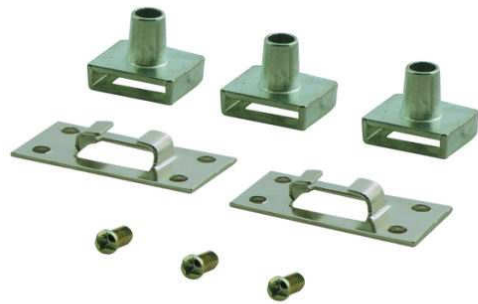
*WITH CLICK SOUND

RL-328 SHOWCASE LOCK



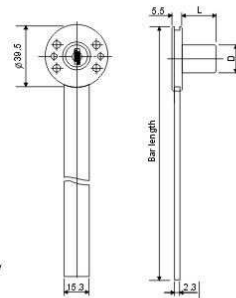
SIZE: 3-6MM TOUGHENED GLASS
COLOR: CHROME, GOLD
MATERIAL: ZINC-ALLOY

RL-108 CENTRAL LOCK top mounted



SURFACE MOUNTING

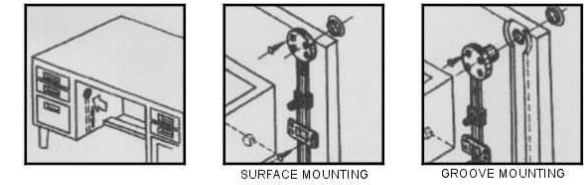
GROOVE MOUNTING



- CYLINDER:** D16.5×L19.5mm zinc alloy
D19×L22.5mm zinc alloy
FINISH: Chrome plated, other finish available upon request.
- ACCESSORIES:** 2 keys
1 aluminum bar 400mm or 500mm for selection other size to be special order
1 rosette

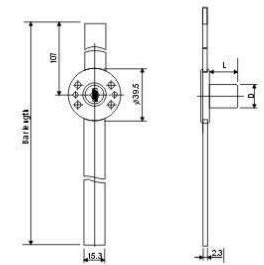
*WITH CLICK SOUND

RL-108A CENTRAL LOCK side mounted



SURFACE MOUNTING

GROOVE MOUNTING



- CYLINDER:** D16.5×L19.5mm zinc alloy
D19×L16mm zinc alloy
FINISH: Chrome plated, other finish to be special order
- ACCESSORIES:** 2 keys
1 aluminum bar 400mm or 500mm for selection other size to be special order
1 rosette
3 pegs A1021 other size to be special order
2 bar guide A1020

*WITH CLICK SOUND

