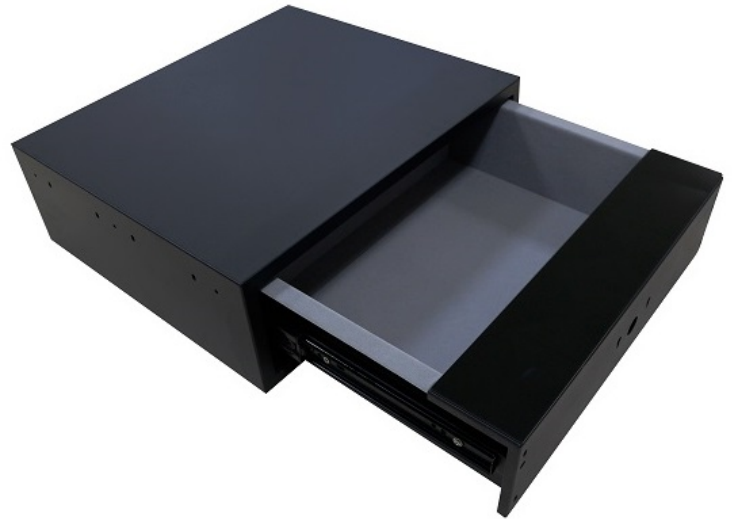


Drawer Safe



Optional jewelry tray available.

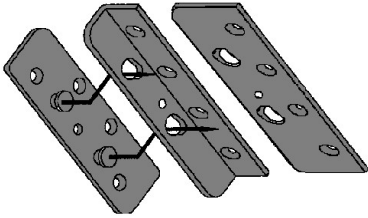
17 7/8" wide x 6" Tall x
13" Deep -
Part # 510 46400 08
Jewelry Tray
#510 45400 18

23 7/8" wide x 6" Tall x
13" Deep -
Part #510 46410 08
Jewelry Tray
#510 60700 18

Complete Drawer Safe - strong steel case and drawer. Extremely well made quality safe ready for installation. Self contained, simply attach to your furniture, cabinet, closet, desk or where ever security is needed.

**Black Case with Gray velvet interior.
17 7/8" wide x 6" Tall x 13" Deep.
23 7/8" wide x 6" Tall x 13" Deep.**

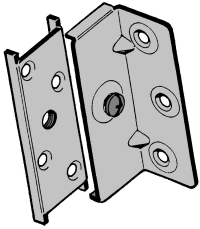
**Back-lit tempered glass touch pad.
Ball bearing drawer slides for a smooth quality action. Ready for your drawer front.**



Safety feature prevents any possible disconnection.

Two Piece Locking Bed Connection System

Part Number	Description	Finish
531 48130 08	130mm Rail Bracket	Black
531 48131 08	130mm "A" or Left 90 Degree Headboard Bracket	Black
531 48132 08	130mm "B" or Right 90 Degree Headboard Bracket	Black
531 48135 08	130mm "A" or Left Sleigh Bed Headboard Bracket	Black
531 48136 08	130mm "B" or Right Left Sleigh Bed Headboard Bracket	Black
531 49130 08	130mm Headboard and Rail Bracket Set	Yellow Zinc



Pre-installed screw.

Super Rigid Corner Bed Bracket

Part Number	Description	Finish
531 02712 01	3 1/2" Tall (sold in sets of 4 = one bed)	Zinc



Strong surface mounting system is super tight.

Maxilock Bed Fastener

Part Number	Description	Finish
531 47085 03	85mm side rail bracket	Zinc
531 47085 13	85mm headboard bracket	Zinc



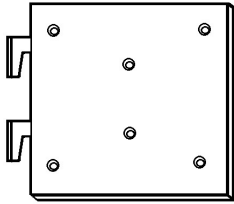
European Surface Mount Bed Bracket

Part Number	Description	Finish
531 44600 01	3 3/4" Euro Style Bed Bracket Set	Zinc



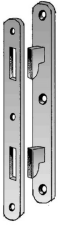
Locking Bed Hook & Bed Post Bracket

Part Number	Description	Finish
531 41476 21	100mm Bed rail bracket part "A" (left)	Zinc
531 41476 41	100mm Bed rail bracket part "B" (right)	Zinc
531 41476 01	100mm Bed post bracket	Zinc



Locking Bed Hook & Bed Post Bracket

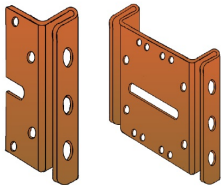
Part Number	Description	Finish
531 41476 51	100mm Bed rail bracket part "A" (left) Full/Twin extension	Zinc
531 41474 61	100mm Bed rail bracket part "B" (right) Full/Twin extension	Zinc



Bed Post Hangers

Part Number	Description	Finish
531 44455 12	5" x 3/4" Hook and receiver sold in sets for 1 bed	Zinc

Traditional bed joining system.

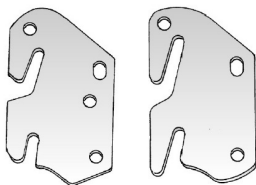


Single Double

Bed Lock Headboard Brackets

Part Number	Description	Finish
531 44064 11	6" Single bed lock with 2" height adjustment	Brown
531 44134 05	3 3/4" Double bed lock (Queen/Full) 3 1/2" spread	Brown

Used with bed either kind of bed hook.



"C" Hook "B" Hook

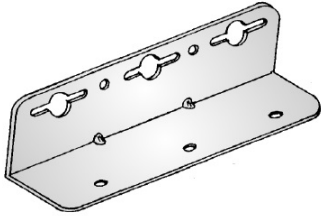
Bed Hook

Part Number	Description	Finish
531 4132401	"B" Hook 4" x 2 5/16"	Plain Steel
531 41425 01	"C" Hook 4" x 2 5/16"	Plain Steel



Bed Pin

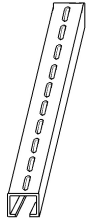
Part Number	Description	Finish
531 42014 01	7/8" x 19/64" Steel Bed Pin	Plain Steel
531 42101 01	1" x 19/64" Steel Bed Pin	Plain Steel
531 42104 01	1 1/4" x 19/64" Steel Bed Pin	Plain Steel
531 42012 01	5/8" x 19/64" Steel Bed Pin	Plain Steel



Waterbed Bracket

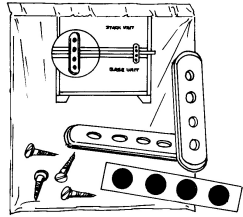
Part Number	Description	Finish
531 61212 01	6" x 1 1/4" x 1 1/4"	Plain Steel

Reinforced L bracket for beds.



Steel Mirror Support with Slotted Holes

Part Number	Description	Finish
703 36001 01	36" Mirror Support	Zinc



Stack-Pack Kit

Part Number	Description	Finish
532 95020 02	2 mending plates, screws, felt protectors and instructions	Zinc

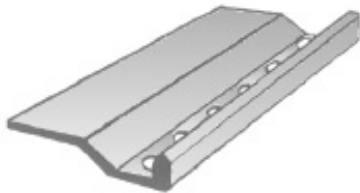
Shipped with furniture to allow customer to assemble and fasten upper and lower unites of furniture.



Mirror Hanger

Part Number	Description	Finish
532 01002 02	Aluminum and Steel Mirror Hanger	Zinc

Two hole hanger.



Mirror Retaining Extrusion

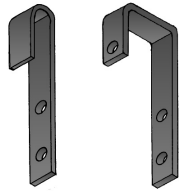
Part Number	Description	Finish
271 99303 15	3" x 1 1/2" x 3/16" offset	Gray

Sawtooth Hanger



Part Number	Description	Finish
532 05900 02	1 5/8" x 1/4" x .030 Hanger	Zinc
532 06000 02	2 1/2" x 5/16" x .030 Hanger	Zinc

Easy inexpensive way to hang mirrors.



Metal Rail Wood Rail

Ladder Hooks

Part Number	Description	Finish
531 54003 08	3/16" Opening Ladder Hook	Black
531 54100 08	1" Opening Ladder Hook	Black
531 54104 08	1 1/4" Opening Ladder Hook	Black
531 54108 08	1 1/2" Opening Ladder Hook	Black

Black powder coated.



Slat Roll Strapping

Part Number	Description	Finish
509 49629 28	2" x 750' Slat roll strapping	Black

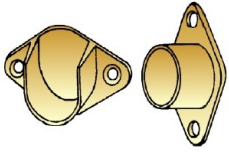
Low cost way to connect slats into a roll for easy instalation.



Tip Restraint Kit

Part Number	Description	Finish
509 00100 12	Steel/Plastic Tip-restraint kit	Zinc

Designed to help prevent furniture tip-over. Installatiion instructions in English, French and Spanish. This product is not to be a substitute for proper parental supervision. Manufacturer assumes no liability for improper installation.



Round Die Cast Metal Hanging Clothes Rod Sockets

Part Number	Description	Finish
196 00813 03	Die cast open socket 1" rod	Brass
196 00813 26	Die cast open socket 1" rod	Dull Nickel
196 00812 26	Die cast closed socket 1" rod	Dull Nickel
780 12834 06	Die cast open socket 1 1/16" rod	Chrome
780 12836 06	Die cast closed socket 1 1/16" rod	Chrome



Steel Hanging Clothes Rods

Part Number	Description	Finish
209 10036 02	1 1/16" x 2mm x 8' Steel round rod	Chrome
209 10040 02	1 1/4" x 1.2mm x 8' Steel round rod	Chrome
209 10046 02	1 5/16" x 2mm x 8' Steel round rod	Chrome
209 10046 85	1 5/16" x 2mm x 8' Steel round rod	Oil Rubbed Bronze